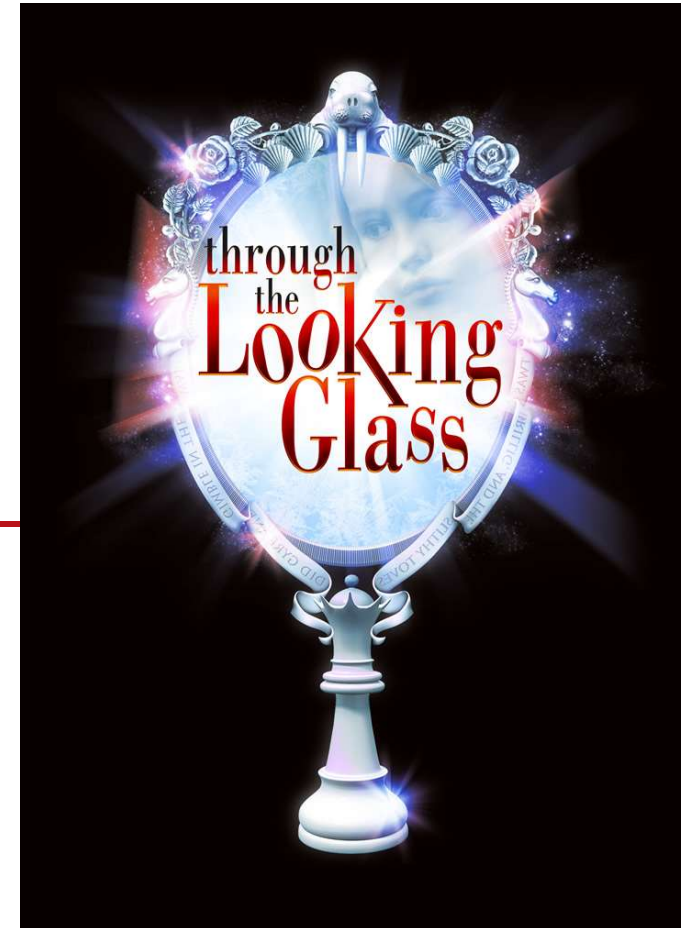


Putting research into practice and policy

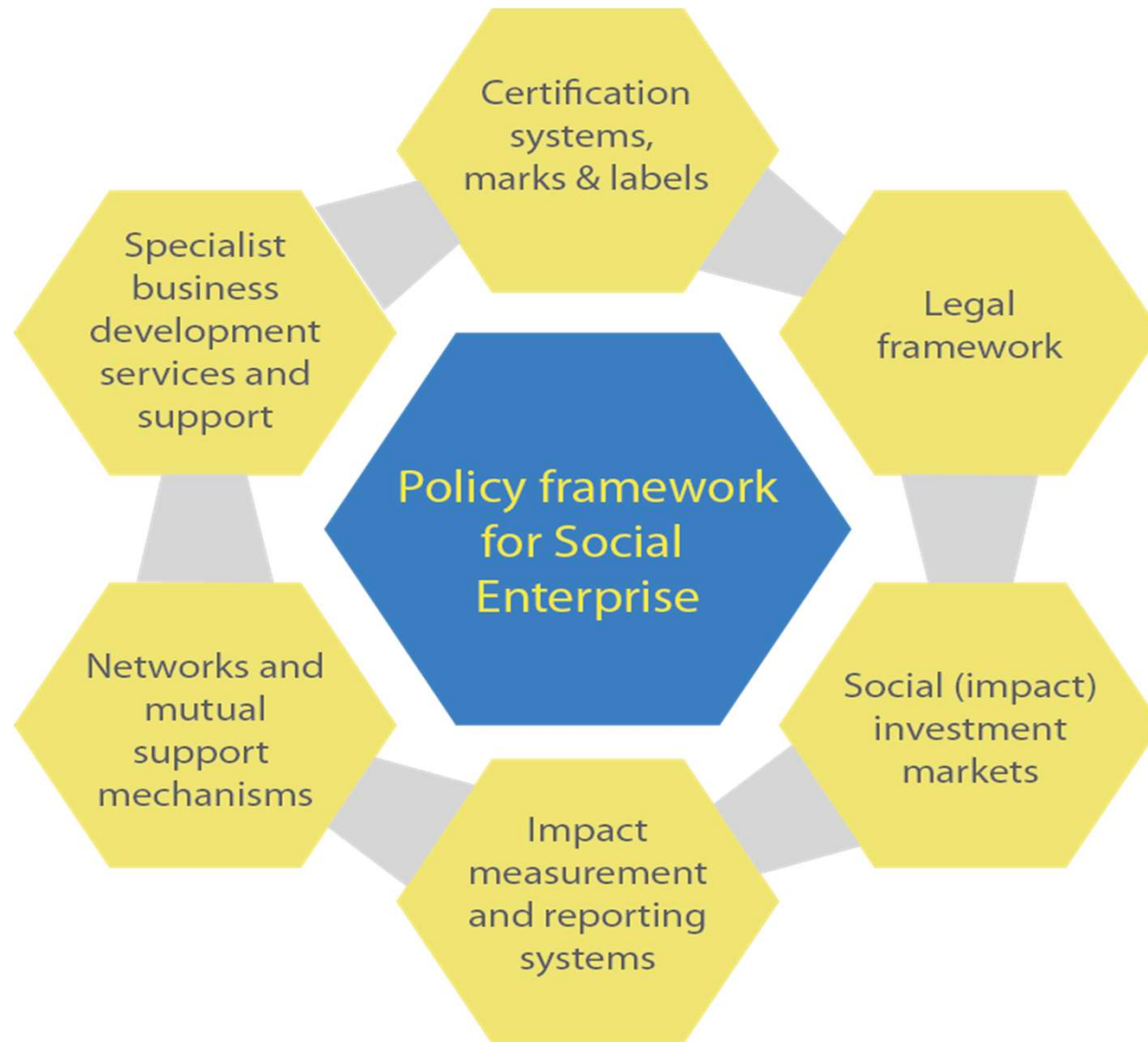
*Katri-Liis Reimann
Associate Professor,
Tallinn University
Visiting Fellow,
Northumbria University
Social Entrepreneur*



Social enterprises



Social Enterprise Ecosystem



Source: A map of social enterprises and their eco-systems in Europe. Synthesis Report. (2015). Luxembourg: Publications Office of the European Union.

MA Social Entrepreneurship

<https://www.tlu.ee/en/yti/social-entrepreneurship>



 **STUDY LEVEL**
Master's Studies

 **DURATION OF STUDY**
2 years

 **LANGUAGE**
English

Social Entrepreneurship

The Social Entrepreneurship programme is a progressive educational initiative of Tallinn University with the aim to promote entrepreneurship and the innovation of the social and health sector, environmental protection, urban development, rural development and community development.

SHARE



Multi-disciplinary innovation

Northumbria Uni -Tallinn Uni cooperation



International networks and cooperation

COSIE

Co-creation of Service Innovation in Europe



- Hackathons for solving wicked societal problems

Through the looking glass.....



Funding & tender opportunities
Single Electronic Data Interchange Area (SEDIA)

English EN

Register

Login



SEARCH FUNDING & TENDERS

HOW TO PARTICIPATE

PROJECTS & RESULTS

WORK AS AN EXPERT

SUPPORT

select programme



Horizon 2020 Framework Programme



clear filter

Feedback

Oct 27, 2017

Innovation in government - building an agile and citizen-centric public sector

ID: GOVERNANCE-18-2019

Type of action:

○ CSA Coordination and support action

Deadline Model : single-stage

Opening: **06 November 2018**

Deadline: **14 March 2019 17:00:00**
Brussels time

Open

Horizon 2020



Horizon 2020 Website

Thank you!

e-mail: kllepik@tlu.ee

mobile: +3725299267

Skype: [katriliis](https://www.skype.com/people/katriliis)

www.linkedin.com/in/katriliis

Võru Hackathon